



UPG
STAY POWERED®

Sealed Lead-Acid Battery

Absorbant Glass Mat (AGM) technology for superior performance. Valve regulated, spill proof construction allows safe operation in any position. Approved for transport by air. D.O.T., I.A.T.A., F.A.A. and C.A.B. certified. U.L. recognized under file number MH 20567.

UPG No. 40596

UB26-12T

Maintenance-Free

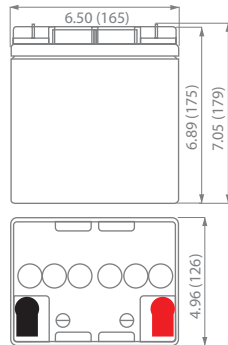


Due to continuous improvements to our products, product may vary slightly from depiction.

Specification

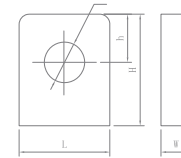
Nominal Voltage	12 volts		
Nominal Capacity	77° F (25° C)		
20-hr. (1.30A)	26.0 Ah		
10-hr. (2.40 A)	24.0 Ah		
5-hr. (4.40 A)	22.0 Ah		
1-hr. (15.5 A)	15.5Ah		
Approximate Weight	17.9 lbs (8.1 kgs)		
Internal Resistance (approx.)	10mΩ		
Shelf Life (% of normal capacity at 68° F (20° C))			
3 Months	6 Months	12 Months	
91%	83%	64%	
Temperature Dependency of Capacity	(20 hour rate)		
104° F (40°C)	77° F (25°C)	32° F (0°C)	5° F (-15°C)
102%	100%	85%	65%
AGM Operational Temperature			
Charge	32°F to 104°F (0°C to 40°C)		
Discharge	5°F to 113°F (-15°C to 45°C)		
AGM Storage Temperature	5°F to 104°F (-15°C to 40°C)		

Physical Dimensions: in (mm)



L: 6.50 in (165 mm)
W: 4.96 in (126 mm)
H: 6.89 in (175 mm)
TH: 7.05 in (179 mm)
 Tolerances are +/- 0.04 in. (+/- 1mm) and +/- 0.08 in. (+/- 2mm) for height dimensions. All data subject to change without notice.

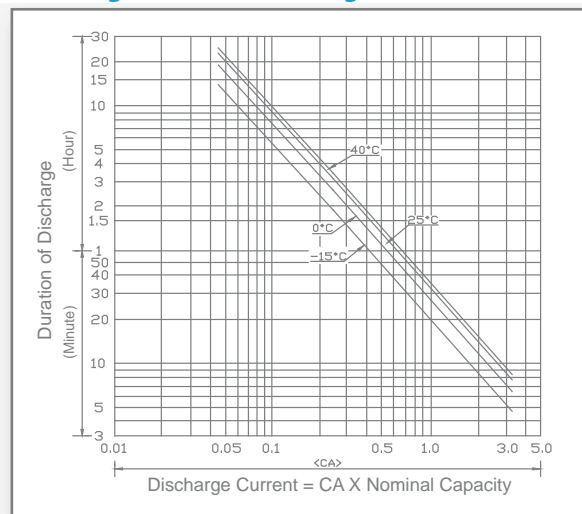
Terminals



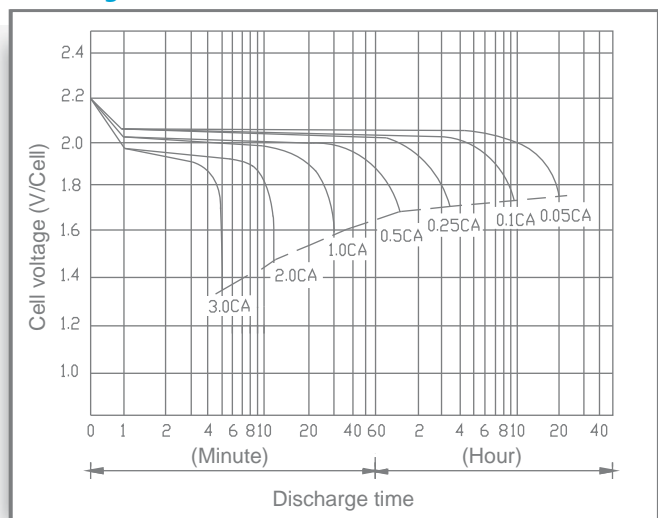
L Series (L Type Terminal)

Dimension Type	L	W	H	h	ø
L2	17.0	9.0	17.0	9.0	6.5

Discharge Time vs. Discharge Current



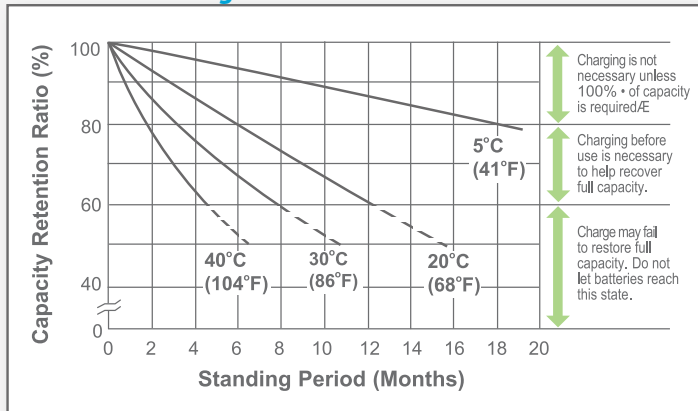
Discharge Characteristics



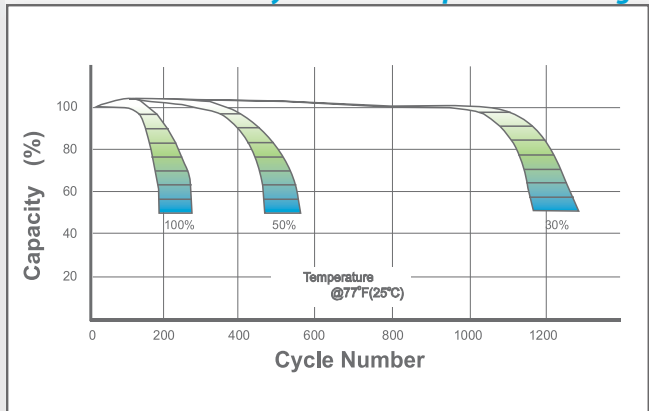
UB26-12T

Maintenance-Free

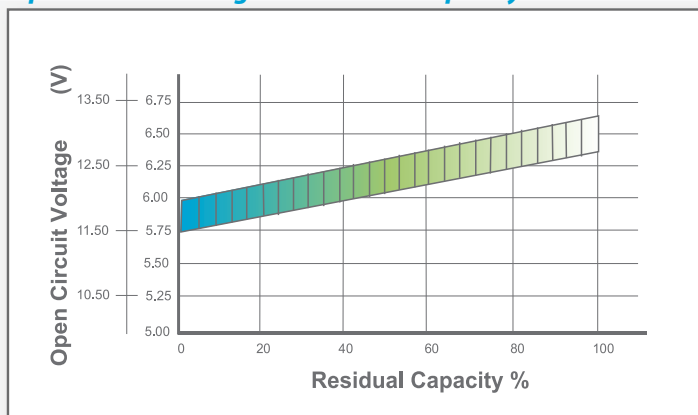
Shelf Life & Storage



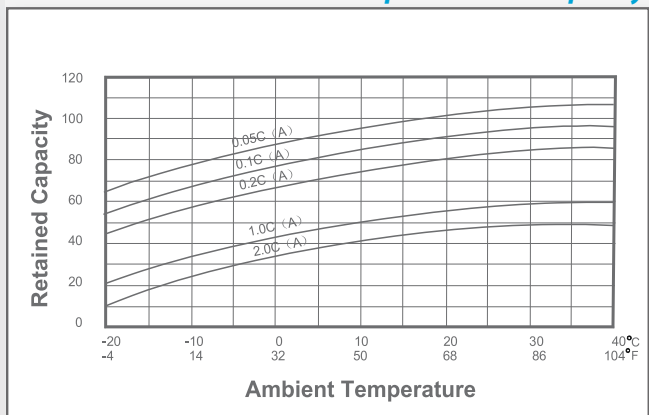
Cycle Life vs Depth of Discharge



Open Circuit Voltage vs Residual Capacity



Effect of Temperature on Capacity



Charge Current & Final Discharge Voltage

Application	Charge Voltage(V/Cell)			Max.Charge Current	Final Discharge Voltage V/Cell	Discharge Current(A)	Final Discharge Voltage V/Cell	Discharge Current(A)	Final Discharge Voltage V/Cell	Discharge Current(A)
	Temperature	Set Point	Allowable Range							
Cycle Use	25°C(77°F)	2.45	2.43-2.47	0.30C	1.75	0.2C>(A)	1.70	0.2C<(A)<0.5C	1.60	0.5C<(A)<1.0C
Standby	25°C(77°F)	2.28	2.27-2.30		1.30	>1.0C				



Let UPG Power Your Life.

www.upgi.com